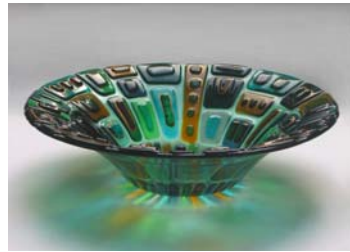


Press information

October 2006



Images: left, flower made from pencil shavings by Akiko and Masako Takada; centre, bejewelled emerald bowl by Alex R; right, organza neckpiece by Ruth Singer.

EFFERVESCENCE: THE WORK OF NEWLY EMERGING ARTISTS AND MAKERS

Sussex Barn Gallery, 8 December – 28 January, 2007

Some of the best new work in contemporary crafts and the visual and applied arts will be showcased in the first annual applied arts exhibition to be held at the Sussex Barn Gallery, West Dean College, from 8 December to 28 January, 2007.

Celebrating the wealth of talent in the UK and abroad, *Effervescence* will feature innovative sculptural and functional work ranging from waterjet cut glass, metals and ceramics to jewellery, automata, textiles and paper. Just in time for Christmas, this extraordinary show is an exciting opportunity for seasoned collectors and first-time buyers to purchase some of the strongest new talent in England and to discover unique and distinctive work. Prices will range from £25 to £5000.

Production work by ceramicist Barnaby Barford and one-of-a-kind pieces by artists such as glass designer Alex R, wallpaper designer Lizzie Allen, tapestry weaver Sachiyo Sharma, textile designer Ruth Singer, waterjet glass maker Vanessa Cutler and identical twins Akiko and Masako Takada will be on show. Also featured will be a selection of newly emerging artists who have been chosen by the Crafts Council as the rising stars of their generation.

...ends/

Notes to editors

- The exhibition runs from 8 December – 28 January, 2007 and is open from 11.30am to 4pm, Wednesday to Sunday (closed 24 December to 2 January).
- Admission to the exhibition is free; admission to gardens is £3 for adults plus concessions.
- The Sussex Barn Gallery is part of the Edward James Foundation, a charitable trust that also includes West Dean College & Gardens and West Dean Tapestry Studio. The college runs over 700 short courses each year as well as postgraduate programmes in visual arts and conservation.
- West Dean College is situated on the A286, six miles north of Chichester and six miles south of Midhurst.
- West Dean website is at www.westdean.org.uk

For further press information and images, please contact:

KARON READ Head of Communications t +44 (0)1243 818277 f +44 (0)1243 818280 e karon.read@westdean.org.uk	CATHARINE RUSSELL Communications Assistant t +44 (0)1243 818280 f +44 (0)1243 818265 e catharine.russell@westdean.org.uk
---	--